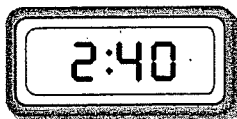
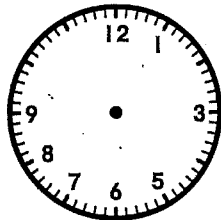


**Homework**

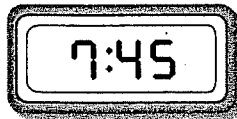
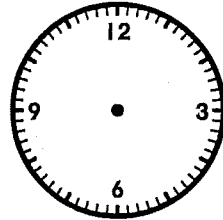
Fill in the missing numbers on the clock faces below.

Draw hands on each clock to show the time.

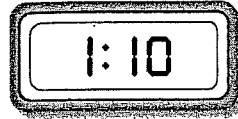
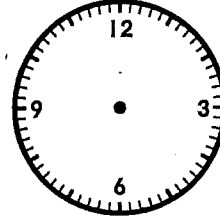
1.



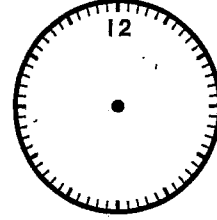
2.



3.

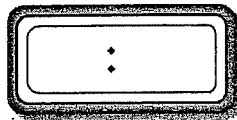
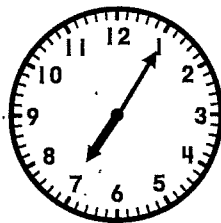


4.

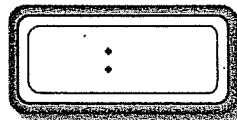
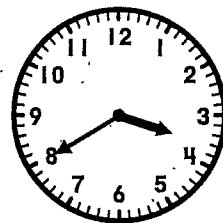


Write the time on each digital clock.

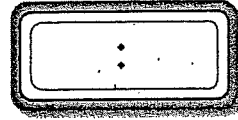
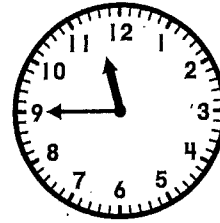
5.



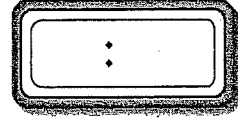
6.



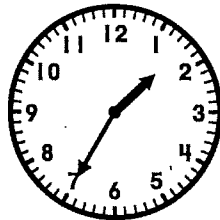
7.



8.



9. Write the time.

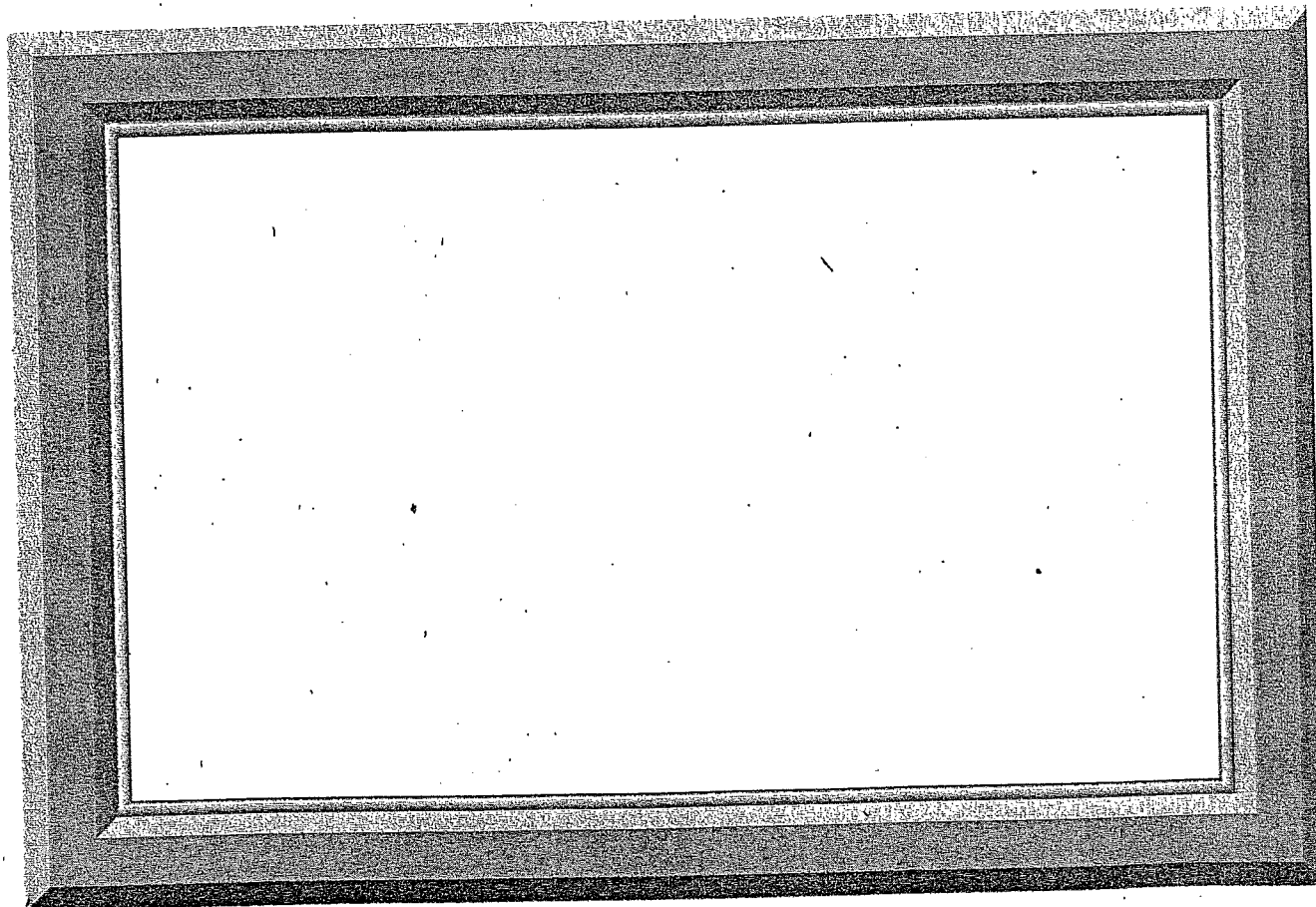
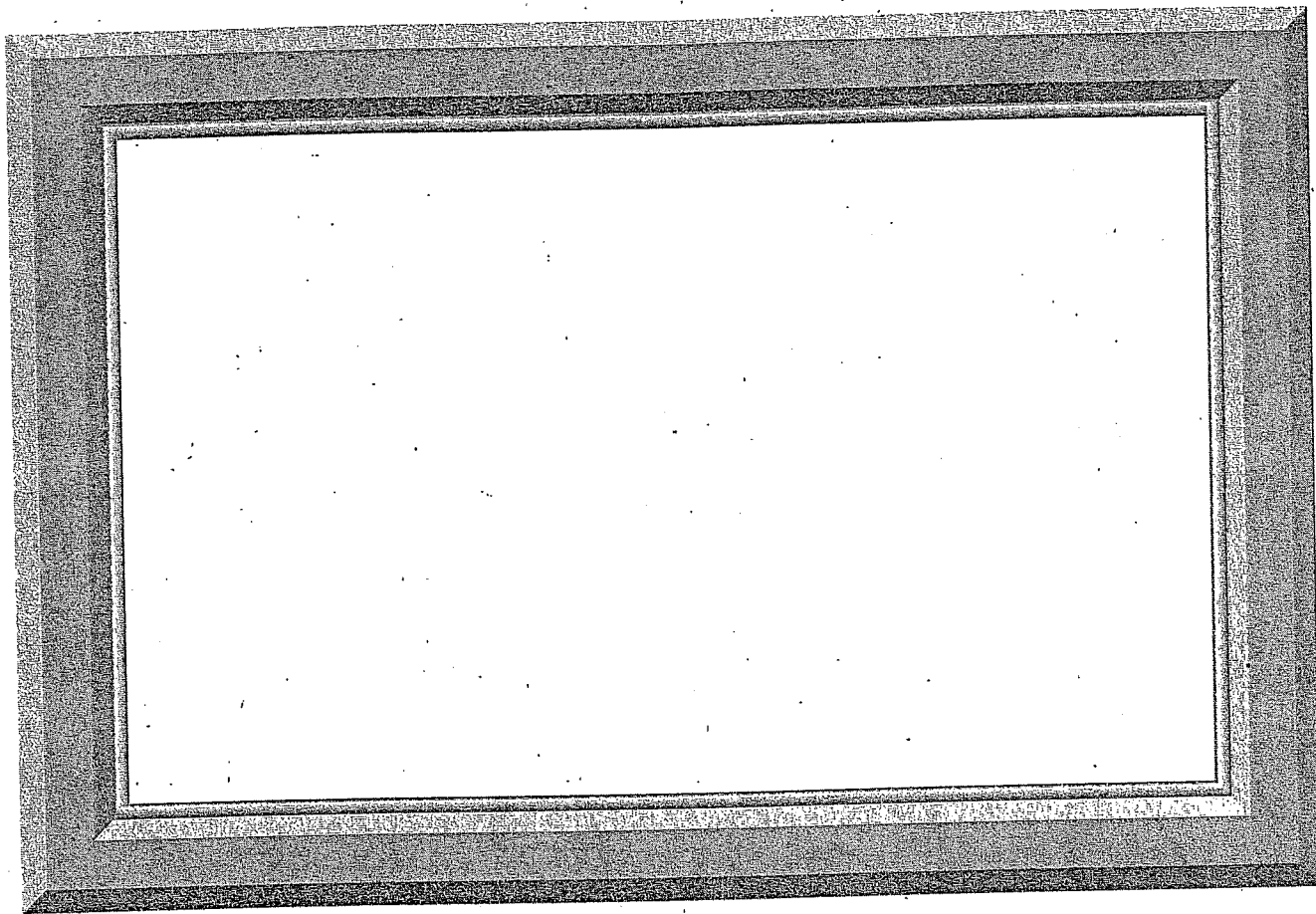


\_\_\_\_\_ minutes before \_\_\_\_\_

\_\_\_\_\_ minutes after \_\_\_\_\_

10. **On the Back** Draw a picture of what you might do at 7:15 A.M. and 7:15 P.M. Draw an analog clock showing the time for each activity.

Name \_\_\_\_\_



Copyright © Houghton Mifflin Company. All rights reserved.